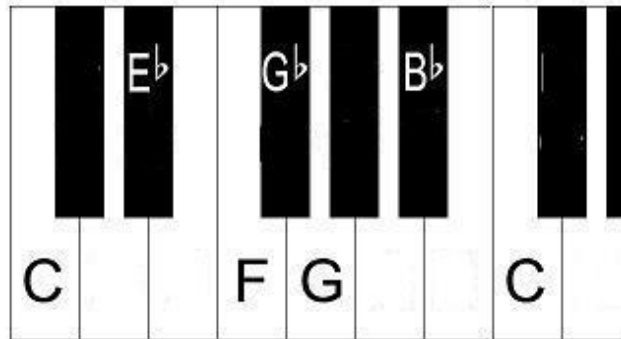


The Blues Scale

The blues scale is a great way to start improvising over a 12-bar blues form. It's a 6-note scale related to a minor pentatonic scale. Any of these 6 notes works at anytime on a blues tune.



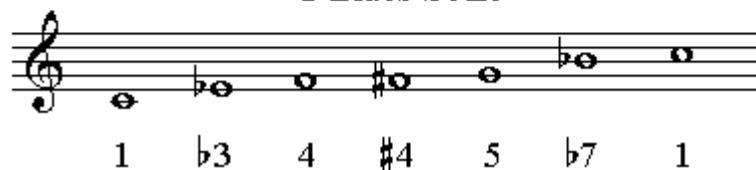
C blues scale



C Major Scale



C Blues Scale



You Tube Links to practice your blues scale to

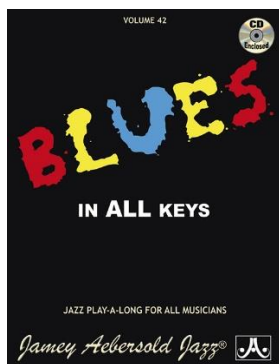
1. Slower tempo all keys <https://youtu.be/9T7RUAGbCx0>
2. Faster tempo all keys https://youtu.be/OZzAic_Bbow
3. Medium Tempo 12 bar blues in Bb https://youtu.be/-ae_tBkCqeQ
4. More Advanced Blues in C <https://youtu.be/YkpG4gBShxM>

Books and Articles:

1. *Exploring the Blues* by Judy Neimack



2. *Blues in All Keys* by Jamey Aebersold



3. <https://www.pbs.org/theblues/classroom/defplaying.html>